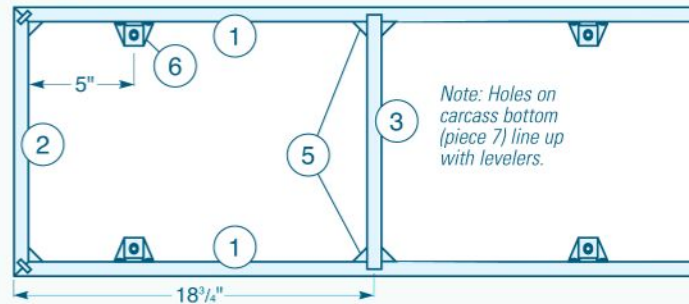


MATERIAL LIST

	T x W x L
1 Plinth Front and Back (2)	3/4" x 5" x 59"
2 Plinth Ends (2)	3/4" x 5" x 14"
3 Plinth Crossmembers (2)	3/4" x 5" x 13 1/4"
4 Splines (4)	1/4" x 3/4" x 5"
5 Corner Glue Blocks (12)	3/4" x 3/4" x 5"
6 Heavy-duty Lifting Levels (6)	Adjustable
7 Carcass Bottom (1)	3/4" x 16 7/8" x 62 1/2"
8 Carcass Ends (2)	3/4" x 16 7/8" x 16 7/8"
9 Carcass Vertical Dividers (2)	3/4" x 16 7/8" x 15 7/8"
10 Carcass Rear Stringer (1)	3/4" x 4" x 62 1/2"
11 Carcass Drawer-Box Tops (2)	3/4" x 16 7/8" x 10 1/2"
12 Carcass Front Trim (1)	1/4" x 1" x 167"
13 Carcass Biscuits (32)	Size #20
14 Drawer Slides (5 pr)	16" Accuride
15 Heavy-duty Drawer Slides (1pr)	16" Accuride

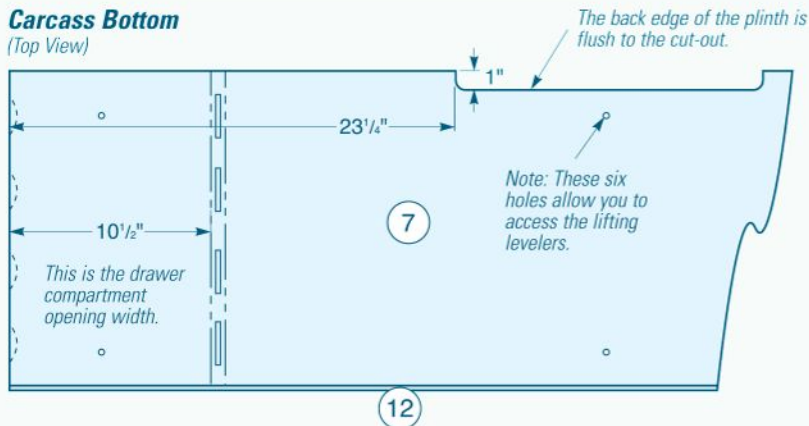
Plinth Subassembly

(Top View)



Carcass Bottom

(Top View)



Carcass Vertical Dividers

(Side View)

